



PORSCHE



Exclusive Cayman

Ultimate personalisation

Contents

Philosophy	6
Exclusive examples	8
Colours and materials	22
Exclusive options	24
Exclusive expertise	44
Designing your Porsche	48
Service	49



Cayman R with 19-inch Boxster Spyder wheels, wheels painted in black, sports exhaust system with sports tailpipe

Philosophy

**Our cars are state of the art,
and made to measure.**

Exclusivity. Individuality. Craftsmanship. Concepts which have always been associated with Porsche.

Porsche Exclusive stands for the individual personalisation of your vehicle, direct from the factory. You tell us what you want and we will do our utmost to give it to you – provided, of course, that it is technically feasible and does not compromise quality.

When customising a car, it is not enough just to use the best available materials. Our overriding principle has always been to make full use of the traditional skills of our craftsmen, carrying out the work by hand. Our specialists have years of experience in hand crafting decorative hardwoods, enabling us to bring out the individual character of this superb material.

What about carbon? Light and extremely durable. Expressing all the excitement of the racetrack. Or stainless steel? Very strong, polished and with a chrome finish – pleasing to the eye and extremely resistant to heat and corrosion. Or another truly brilliant possibility: highly-polished anodised aluminium.

Would you like to upgrade the interior or exterior of your car, add an Aerokit or a sports exhaust system? Your wish is our command.



Material composition: leather, carbon, Alcantara and aluminium

Exclusive examples

Vehicle: Porsche.

Details: Porsche Exclusive.

A Porsche is more than just a car. It is also an expression of the personal freedom of its driver, and of their very own taste and lifestyle.

Porsche Exclusive offers you a wide range of individual extras so you can personalise your car to your own unique requirements, straight from the factory. Visual and technical enhancements, for the interior and exterior, the way you want them.

The most important extra, though, is time. For it is only by taking the utmost care during the consultancy, planning and processing phases that it is possible to create something really special. Something which is exactly tailor made to your requirements – down to the finest detail. Something unique, with its own individual character. A Porsche which is as special as its driver.

The following pages will show you two examples of Exclusive personalisations which are sure to inspire you.

Find out more about how to design your own special Porsche on page 48.



Cayman S with Cayman Aerokit, decorative side logo with model designation, wheels painted in Meteor Grey Metallic, rear side air intake grilles painted in a contrasting exterior colour



Cayman Aerokit, wheels painted in exterior colour

Cayman S

Basalt Black Metallic

**Customisable,
but uncompromising.**

Cayman Aerokit. Sports exhaust system with sports tailpipe. Sports bucket seats with Porsche Crest. In short, a Cayman personalised without compromise. Completely and utterly your Porsche.

Find out more about the equipment details of the Cayman S in Basalt Black Metallic in the current Cayman price list.



Rear-view mirror in leather, sun visors in two-tone leather



Cayman Aerokit



Cayman Aerokit, front air intake grilles painted, headlight cleaning system covers painted, wheels painted in exterior colour



Extended trim package in carbon, instrument cluster dials and Sport Chrono stopwatch dial in Guards Red, rear centre console in carbon, steering column casing in leather, rear-view mirror in leather, sun visors in two-tone leather



Cayman Aerokit, wheels painted in exterior colour, sports exhaust system with sports tailpipe



Sports bucket seat belt passages painted, Porsche Crest embossed on headrests



Decorative side logo with model designation, 19-inch Carrera Sport wheels, mirror attachment point finishers painted, rear apron grilles

Cayman

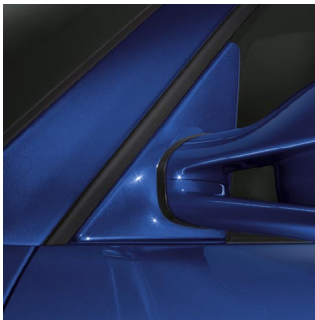
Aqua Blue Metallic

Fancy a return to normality?

Are you sure?

Exterior package in matt Aluminium Look. Rear apron grilles. Aluminium handbrake lever and gear selector for the 7-speed Porsche Doppelkupplung (PDK). Strong willed, after all, it is a Porsche.

Find out more about the equipment details of the Cayman in Aqua Blue Metallic in the current Cayman price list.



Mirror attachment point finishers painted



Rear apron grilles



Exterior package in matt Aluminium Look, spoiler lips in matt Aluminium Look, mirror attachment point finishers painted, 19-inch Carrera Sport wheels, decorative side logo with model designation



Extended trim package in matt Aluminium Look, multifunction steering wheel in Aluminium Look, switch panel trim strip in Aluminium Look, air vent slats in Aluminium Look, PDK gear selector and handbrake lever in Aluminium Look, rear centre console in leather, seat belt buckles in leather, PCM package in leather, steering column casing in leather, sun visors in leather



Decorative side logo with model designation, 19-inch Carrera Sport wheels, mirror attachment point finishers painted, rear apron grilles



PDK gear selector and handbrake lever in aluminium, PDK gear selector gate surround in leather, rear centre console in leather

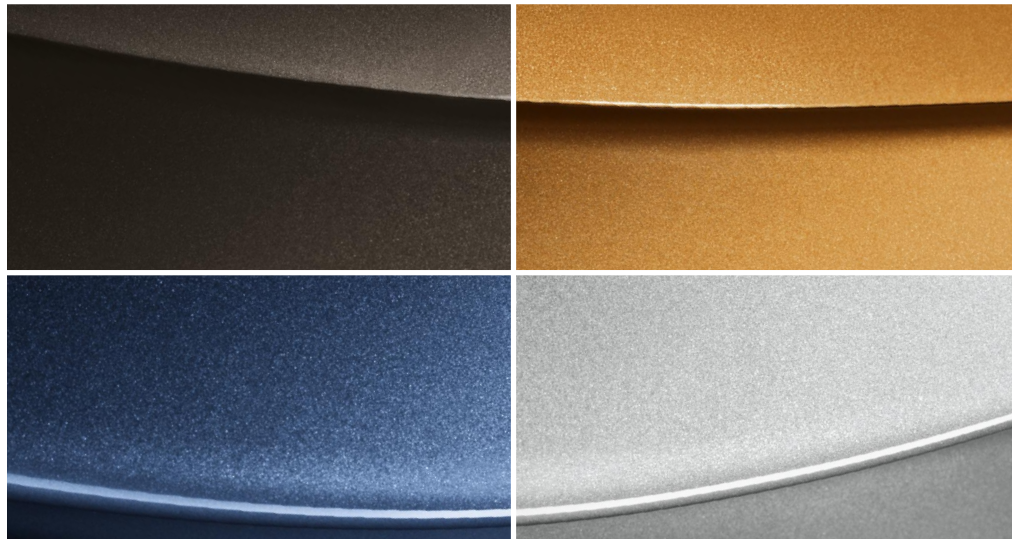
Colours and materials

Exceptional, extravagant, exquisite, excellent, exact.

In a word: Exclusive.

We can offer an exclusive range of colours and materials for you to choose from when designing your new Porsche – both inside and outside. Individual colours for the interior and exterior and also high-quality materials such as leather, Alcantara, fine macassar wood¹⁾,

carbon, aluminium and stainless steel to enhance the interior. You can find out what is possible at your Porsche Centre, or contact the Porsche Exclusive Customer Centre in Zuffenhausen directly for an individual consultation (see page 48).

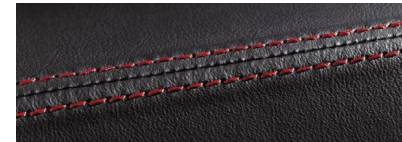


Selection of individual colours: Marrone Metallic, Nordic Gold Metallic, Azurro California Metallic, Polar Silver Metallic

¹⁾ Since wood is a natural product, there may be variations in colour and grain.

Leather

Leather is a traditional natural material – a true classic. Items made of leather are both timeless and hardwearing.



Alcantara

This high quality material is easy-care, washable and has a pleasant feel.



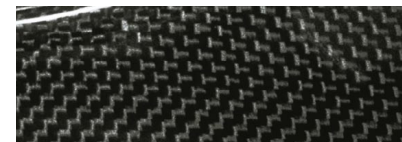
Macassar wood¹⁾

Macassar ebony is dark and distinctive with a modern, elegant look. The deep black heartwood has reddish-brown lines and a dramatic, marble like texture.



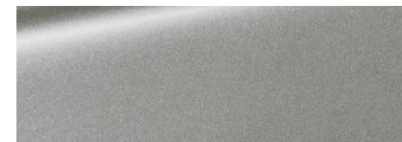
Carbon

Carbon is a light but highly durable material which has its origins in motorsport. Its high-tech look gives a sporty feel to the interior.



Aluminium

Aluminium or Aluminium Look paint sets clear accents and emphasises a no-frills sporting approach.



Stainless steel

Stainless steel is an especially pure material – and it looks absolutely first class.





Rear apron grilles, exterior package in matt Aluminium Look, decorative side logo with model designation, mirror attachment point finishers painted, 19-inch Carrera Sport wheels



Exterior mirror lower trims in matt Aluminium Look



Headlight cleaning system cover painted

Exclusive options

Exterior.

Option	Cayman	Cayman S	Cayman R	I no.	Page
• Cayman Aerokit	<input type="radio"/>	<input type="radio"/>	–	XAM	9, 10, 14
• Exterior package in matt Aluminium Look	<input type="radio"/>	<input type="radio"/>	–	DAF	17, 24
• Spoiler lips in matt Aluminium Look	<input type="radio"/>	<input type="radio"/>	–	CNX	17
• Exterior mirror lower trims in matt Aluminium Look	<input type="radio"/>	<input type="radio"/>	–	XUZ	25
• Spoiler lips painted ¹⁾	<input type="radio"/>	<input checked="" type="radio"/>	–	CNJ	–
• Mirror attachment point finishers painted ¹⁾	<input type="radio"/>	<input type="radio"/>	<input type="radio"/>	CMA	16, 24
• Front air intake grilles painted ¹⁾	<input type="radio"/>	<input type="radio"/>	–	CAF	9, 11

Exterior.

Option	Cayman	Cayman S	Cayman R	I no.	Page
• Rear side air intake grilles painted in a contrasting exterior colour	<input type="radio"/>	<input type="radio"/>	–	CAE	Title, 9
• Rear apron grilles	<input type="radio"/>	<input type="radio"/>	–	XAU	16, 24
• Headlight cleaning system cover painted ¹⁾	<input type="radio"/>	<input type="radio"/>	<input type="radio"/>	XUB	9, 11, 25
• Decorative side logo with model designation	<input type="radio"/>	<input type="radio"/>	–	CMX	9, 16, 24
• Model designation painted ¹⁾	<input type="radio"/>	<input type="radio"/>	–	XUC	–
• Fuel filler cap in Aluminium Look	<input type="radio"/>	<input type="radio"/>	<input type="radio"/>	XYB	–

– not available I number/extra-cost option standard equipment W no-cost option
More detailed information on individual equipment and equipment packages can be found in the current vehicle price list.

¹⁾ Paint in exterior colour unless otherwise specified at time of ordering.
For information on painting in a contrasting exterior colour, please contact your Porsche Centre.



Sports tailpipe



Short shifter



19-inch Carrera Sport wheel



Wheels painted in exterior colour

Engine, transmission and chassis.

Option	Cayman	Cayman S	Cayman R	I no.	Page
• Sports tailpipe	○	○	–	XLS	26
• Sports exhaust system	○	○	○	XLF	5, 14
• Short shifter	○	○	○	XCZ	26

Wheels.

Option	Cayman	Cayman S	Cayman R	I no.	Page
• 19-inch Carrera Sport wheels ¹⁾	○	○	○	XRR	16, 27
• Wheels painted in exterior colour	○	○	○	XD9	10, 27
• Wheels painted in different exterior colour					
Black	○	○	○	XDA	5
Basalt Black Metallic	○	○	○	XDB	–
Speed Yellow	○	○	○	XDC	–
Carrara White	○	○	○	XDD	–
Guards Red	○	○	○	XDE	–
Other standard and special colours	○	○	–	CRX	Title, 9
• Wheel spacers on front and rear axle, 5-mm	○	○	○	XRP	–

– not available ○ I number/extra-cost option ● standard equipment W no-cost option
 More detailed information on individual equipment and equipment packages can be found in the current vehicle price list.

¹⁾ Includes wheel centres with full-colour Porsche Crest.



Door release lever panels painted black, door release levers painted black, instrument cluster surround painted black, switch panel trim strip painted black, PCM package painted black



Instrument cluster surround painted



Air vent slats painted

Interior.

Option	Cayman	Cayman S	Cayman R	I no.	Page
• Door release lever panels painted ¹⁾	○	○	–	CET	28
• Door release levers painted ¹⁾	○	○	–	CMC	28
• Instrument cluster surround painted ¹⁾	○	○	–	CDP	28, 29
• Switch panel trim strip painted ¹⁾	○	○	–	XDM	28
• Air vents painted ²⁾	○	○	–	CKB	–
• Air vent slats painted ¹⁾	○	○	–	CDN	29
• Gear lever/selecter trim painted ¹⁾	○	○	○	XDJ	–
• PDK gear selector gate surround painted ¹⁾	○	○	○	XWS	–
• Sports bucket seat belt passages painted ¹⁾	○	○	○	CMT	15

Interior.

Option	Cayman	Cayman S	Cayman R	I no.	Page
• Instrument dials in					
Sand Beige	○	○	–	XFD	–
Guards Red	○	○	–	XFG	12, 39
Speed Yellow	○	○	–	XFH	–
Carrara White	○	○	–	XFJ	–
• Sport Chrono stopwatch instrument dial in					
Sand Beige	○	○	–	CGD	–
Guards Red	○	○	–	CGG	12, 39
Speed Yellow	○	○	–	CGH	–
Carrara White	○	○	–	CGJ	–

– not available ○ I number/extra-cost option • standard equipment W no-cost option
More detailed information on individual equipment and equipment packages can be found in the current vehicle price list.

¹⁾ Paint in exterior colour. This option is also available in black paint, independent of the exterior colour (different order number).
Please refer to the current vehicle price list for details and order numbers.

²⁾ Paint in exterior colour.



Rear centre console painted, gear and handbrake levers in Aluminium I



Extended door trim package in leather



Interior package in leather with exclusive Cayman design



Seat belts in Sand Beige

Interior.

Option	Cayman	Cayman S	Cayman R	I no.	Page
• Rear centre console painted ¹⁾	<input type="radio"/>	<input type="radio"/>	–	XME	30
• Sports seat backrests painted ¹⁾	<input type="radio"/>	<input type="radio"/>	<input type="radio"/>	XSA	–
• Seat belts in					
Silver Grey	<input type="radio"/>	<input type="radio"/>	<input type="radio"/>	XSH	–
Sand Beige	<input type="radio"/>	<input type="radio"/>	–	XST	31
Guards Red	<input type="radio"/>	<input type="radio"/>	–	XSX	–
Speed Yellow	<input type="radio"/>	<input type="radio"/>	–	XSY	–
• PCM package painted ²⁾	<input type="radio"/>	<input type="radio"/>	<input type="radio"/>	CUF	28
• Door storage compartment lighting	<input type="radio"/>	<input type="radio"/>	–	CEF	–

– not available I number/extra-cost option standard equipment W no-cost option
More detailed information on individual equipment and equipment packages can be found in the current vehicle price list.

Interior: leather³⁾.

Option	Cayman	Cayman S	Cayman R	I no.	Page
• Extended trim package in leather	<input type="radio"/>	<input type="radio"/>	–	EBF	–
• Extended door trim package in leather	<input type="radio"/>	<input type="radio"/>	–	XTV	30
• Door release levers in leather	<input type="radio"/>	<input type="radio"/>	–	CYM	–
• Interior package in leather with exclusive Cayman design	<input type="radio"/>	<input type="radio"/>	–	DAY	31
• Instrument cluster surround in leather	<input type="radio"/>	<input type="radio"/>	–	XNG	–

¹⁾ Paint in exterior colour.

²⁾ Paint in exterior colour. This option is also available in black paint, independent of the exterior colour (different order number). Please refer to the current price list for your specific vehicle for details and order numbers.

³⁾ Leather trim in interior colour unless otherwise specified at time of ordering. For information on leather trim in a contrasting interior colour, please contact your Porsche Centre.



Steering wheel rim with contrasting decorative stitching



Dashboard end trim in leather from the interior package (A-pillar) in leather



Windscreen defroster panel and defroster vents in leather



Gear lever trim in leather

Interior: leather¹⁾.

Option	Cayman	Cayman S	Cayman R	I no.	Page
• Steering wheel rim with contrasting decorative stitching	○	○	○	CLU	32
• Steering column casing in leather	○	○	○	XNS	12, 18
• Windscreen defroster panel in leather	○	○	○	XV1	33
• Windscreen defroster vents in leather	○	○	○	CNB	33
• Interior package (A-pillar) in leather	○	○	○	EAK	32
• Sun visors in leather	○	○	○	XMP	18
• Sun visors in leather, two-tone	○	○	○	CVV	10, 12

Interior: leather¹⁾.

Option	Cayman	Cayman S	Cayman R	I no.	Page
• Rear-view mirror in leather	○	○	○	XVW	10, 12
• Switch panel trim strip in leather	○	○	–	XVP	–
• PCM package in leather	○	○	○	CUR	18, 37
• Gear lever trim in leather	○	○	○	XDZ	33
• PDK gear selector gate surround in leather	○	○	○	XWU	21
• Gear lever/selector trim in leather	○	○	○	CYP	–

– not available ○ I number/extra-cost option • standard equipment W no-cost option
More detailed information on individual equipment and equipment packages can be found in the current vehicle price list.

¹⁾ Leather trim in interior colour unless otherwise specified at time of ordering.
For information on leather trim in a contrasting interior colour, please contact your Porsche Centre.



Rear centre console in leather, storage compartment cover with Porsche Crest, seat belt buckles in leather



Inner door sill guards in leather, door sill guards with personalised logo in stainless steel, illuminated



Personalised floor mats with leather surround



Storage compartment cover in Alcantara with Porsche logo

Interior: leather¹⁾.

Option	Cayman	Cayman S	Cayman R	I no.	Page
• Rear centre console in leather	○	○	–	XMZ	18, 21, 34
• Storage compartment cover with Porsche Crest	○	○	○	XPT	34
• Storage compartment cover with Cayman S logo	–	○	–	XUV	–
• Seat backrest clothes hooks in leather	○	○	○	XVY	–
• Porsche Crest embossed on headrests	○	○	○	XSC	15

Interior: leather¹⁾.

Option	Cayman	Cayman S	Cayman R	I no.	Page
• Seat belt buckles in leather	○	○	○	CDT	18, 34
• Fuse box cover in leather	○	○	○	CUJ	41
• Inner door sill guards in leather	○	○	○	CTG	34
• Floor mats with leather surround	○	○	○	CJX	–
• Personalised floor mats with leather surround	○	○	○	CFX	35
• Key pouch in leather	○	○	○	CPU	–

– not available ○ I number/extra-cost option • standard equipment W no-cost option
More detailed information on individual equipment and equipment packages can be found in the current vehicle price list.

¹⁾ Leather trim in interior colour unless otherwise specified at time of ordering.
For information on leather trim in a contrasting interior colour, please contact your Porsche Centre.



Interior: Alcantara



Interior: macassar wood

Interior: Alcantara.

Option	Cayman	Cayman S	Cayman R	I no.	Page
• Door trim package in Alcantara	○	○	○	CLF/XFZ	36
• Steering wheel in Alcantara	○	○	–	CLA	36
• Switch panel trim strip in Alcantara	○	○	–	CLE	36
• Gear and handbrake levers in Alcantara	○	○	○	DAT	36
• PDK gear selector and handbrake lever in Alcantara	○	○	○	DAP	–
• Rear centre console in Alcantara	○	○	–	CLM	–
• Storage compartment cover in Alcantara with Porsche logo	○	○	○	XLG	35, 36

Interior: macassar wood, carbon, Aluminium Look.

Option	Cayman	Cayman S	Cayman R	I no.	Page
• Extended trim package in					
Macassar wood	○	○	–	XTT	37
Carbon	○	○	–	XTL	12, 38
Aluminium Look	○	○	–	EBJ	18, 38
• Rear centre console in					
Macassar wood	○	○	–	XJT	37
Carbon	○	○	–	XMJ	12, 38
Aluminium Look	○	○	–	XCK	38

– not available ○ I number/extra-cost option • standard equipment W no-cost option
 More detailed information on individual equipment and equipment packages can be found in the current vehicle price list.



Interior: carbon



Interior: Aluminium Look



Extended trim package in Aluminium Look, multifunction steering wheel, dashboard trim strip and air vent slats in Aluminium Look, instrument dials and Sport Chrono stopwatch instrument dial in Guards Red

Interior: stainless steel/aluminium/Aluminium Look.

Option

	Cayman	Cayman S	Cayman R	I no.	Page
• Instrument cluster surround in Aluminium Look	○	○	–	XCL	18, 38, 39
• Multifunction steering wheel for PDK in Aluminium Look	○	○	–	XPU	18, 38, 39
• Air vent slats in Aluminium Look	○	○	–	CDA	18, 38, 39
• Dashboard trim strip in Aluminium Look	○	●	–	CDE	18, 38, 39

– not available ○ I number/extra-cost option ● standard equipment W no-cost option
 More detailed information on individual equipment and equipment packages can be found in the current vehicle price list.



Gear and handbrake levers in aluminium I



Fuse box cover in leather, sports-style footrest



PCM package in Aluminium Look, PDK gear selector gate surround in Aluminium Look

Interior: stainless steel/aluminium/Aluminium Look.

Option	Cayman	Cayman S	Cayman R	I no.	Page
• Gear and handbrake levers in aluminium I	<input type="radio"/>	<input type="radio"/>	–	ECA	30, 40
• Gear and handbrake lever trim package I	<input type="radio"/>	<input type="radio"/>	–	DAX	–
• Gear and handbrake levers in aluminium II	<input type="radio"/>	<input type="radio"/>	–	ECC	–
• Gear and handbrake lever trim package II	<input type="radio"/>	<input type="radio"/>	–	DAW	–
• PDK gear selector and handbrake lever in aluminium	<input type="radio"/>	<input type="radio"/>	–	ECB	18, 21
• PDK gear selector and handbrake lever trim package	<input type="radio"/>	<input type="radio"/>	–	DAZ	–
• Handbrake lever in aluminium II	<input type="radio"/>	<input type="radio"/>	<input type="radio"/>	XFP	–
• Handbrake lever in aluminium II with decorative stitching in contrasting colour	<input type="radio"/>	<input type="radio"/>	<input type="radio"/>	CFP	–

Interior: stainless steel/aluminium/Aluminium Look.

Option	Cayman	Cayman S	Cayman R	I no.	Page
• Gear lever/selector trim in Aluminium Look	<input type="radio"/>	<input checked="" type="radio"/>	–	CDF	18, 38
• PCM package in Aluminium Look	<input type="radio"/>	<input type="radio"/>	–	CCP	38, 41
• Sports-style footrest	<input type="radio"/>	<input type="radio"/>	<input type="radio"/>	XXZ	41
• Sports bucket seat belt passages in Aluminium Look	<input type="radio"/>	<input type="radio"/>	–	CMS	–
• PDK gear selector gate surround in Aluminium Look	<input type="radio"/>	<input type="radio"/>	–	XWR	41

– not available I number/extra-cost option standard equipment W no-cost option
 More detailed information on individual equipment and equipment packages can be found in the current vehicle price list.



Door sill guards with personalised logo in stainless steel, illuminated



Door sill guards in carbon



Door sill guards in carbon, illuminated



Door sill guards in stainless steel



Door sill guards with personalised logo in stainless steel with logo in Nordic Gold Metallic

Door sill guards.

Option	Cayman	Cayman S	Cayman R	I no.	Page
• Door sill guards in carbon	○	○	–	X69	43
• Door sill guards in carbon, illuminated	○	○	–	XXD	43
• Door sill guards with personalised logo in carbon, illuminated	○	○	–	CXE	–
• Door sill guards in stainless steel	○	○	–	X70	43
• Door sill guards in stainless steel, illuminated	○	○	–	XXB	–
• Door sill guards with personalised logo in stainless steel	○	○	–	CUA	43
• Door sill guards with personalised logo in stainless steel, illuminated	○	○	–	CXC	34, 42

– not available ○ I number/extra-cost option • standard equipment W no-cost option
 More detailed information on individual equipment and equipment packages can be found in the current vehicle price list.



Exclusive expertise

When was the last time your dream became reality?

A philosophy of thinking laterally and pursuing different routes is undoubtedly what has led Porsche in a very special direction: an exclusive one. Small scale production and special editions which commenced at the beginning of the 1980s with the 935 Street still continue to this day. At the heart of it all is the Porsche 'personalisation programme' which has been known since 1986 as Porsche Exclusive.

The 25th anniversary of Porsche Exclusive sees us continuing that tradition of small-scale production with a vehicle which yet again shows you just what we're capable of. A vehicle that takes us back to where the dream began – to the first Porsche, in fact, the Porsche 356. Hence, the limited number of 356 and the name of the vehicle: the 911 Speedster.

The 911 Speedster may well be a limited edition, but your dreams know no limits. We do everything possible to fulfil your wishes. To make your Porsche even more exclusive and exactly how you imagined it to be. We're even happy to include extras featured on the 911 Speedster. So whether your preference is for a PDK gear selector/handbrake lever in aluminium, black painted mirror attachment point finishers and exterior mirror lower trims, or door sill guards with personalised logo, almost anything is possible.

This is how we continue to create unique vehicles, and make dreams come true. Perhaps even yours one day soon.



Designing your Porsche

Porsche Exclusive – What else is exclusive to each and every car? Exclusive advice.

Everything starts with the right advice, and the focus is on you and your exclusive wishes and requirements. We offer personal support and individual expert advice to each and every customer.

So, why wait? Make an appointment with your Porsche Centre to discuss your requirements.

Or contact the Porsche Exclusive Customer Centre in Zuffenhausen directly:
tel.: +49 (0)711 911-25977 or e-mail: customercenter-exclusive@porsche.de.

You can see what we really mean by customisation at our Porsche Exclusive Customer Centres in Zuffenhausen and Leipzig.

Here, among other things, you can select the materials, exclusive woods, paint colours and leather of your choice and plan your own

Porsche using the Porsche Car Configurator. We want to show you what we can do, and you can experience how we make customer requirements into reality, here, directly on site. All down to the finest detail, just as you expect from Porsche Exclusive.

The Porsche new vehicle warranty applies for all Porsche Exclusive options and special designs. Please note that delivery times may be extended for certain Porsche Exclusive equipment.



Porsche Financial Services

Our innovative suite of financial services is specially tailored to the needs of Porsche owners. Products range from attractive finance and leasing options to vehicle insurance and the Porsche Card.

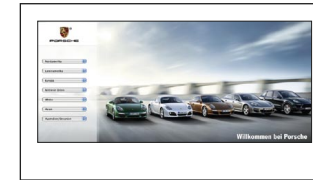
Porsche Used Car Programme

So that our vehicles remain reliable and retain their value, we guarantee that all our Porsche Approved cars meet the most stringent Porsche quality standards, anywhere in the world. Every car is backed by the Porsche Approved warranty.

Porsche Tequipment

Personalise your Porsche at any time after purchase with the Tequipment range of approved accessories. Designed exclusively for your car, every product is fully guaranteed.

Service



Porsche Online

For all the latest news and information from Porsche, go to www.porsche.com



Porsche Design Driver's Selection

With products ranging from fashion and accessories to tailored luggage, this unique collection combines quality and style with everyday practicality.



Porsche Clubs

Since the first Porsche Club was founded in 1952, their number has grown to 620 with a total of 180,000 members worldwide. To find out more, call +49 (0)711 911-78307 or go to www.porsche.com



Porsche Driving Experience

The Porsche Travel Club offers exclusive driving experiences worldwide: +49 (0)711 911-78155. Learn how to push your Porsche to the limit at the Porsche Sport Driving School: +49 (0)711 911-78683.






25 years Porsche Exclusive